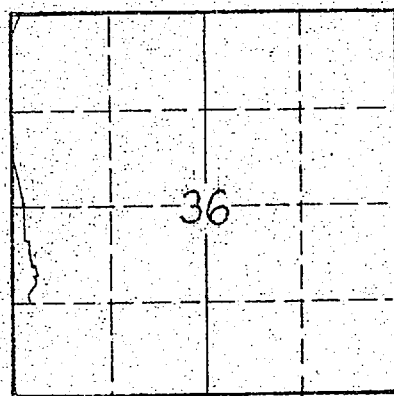
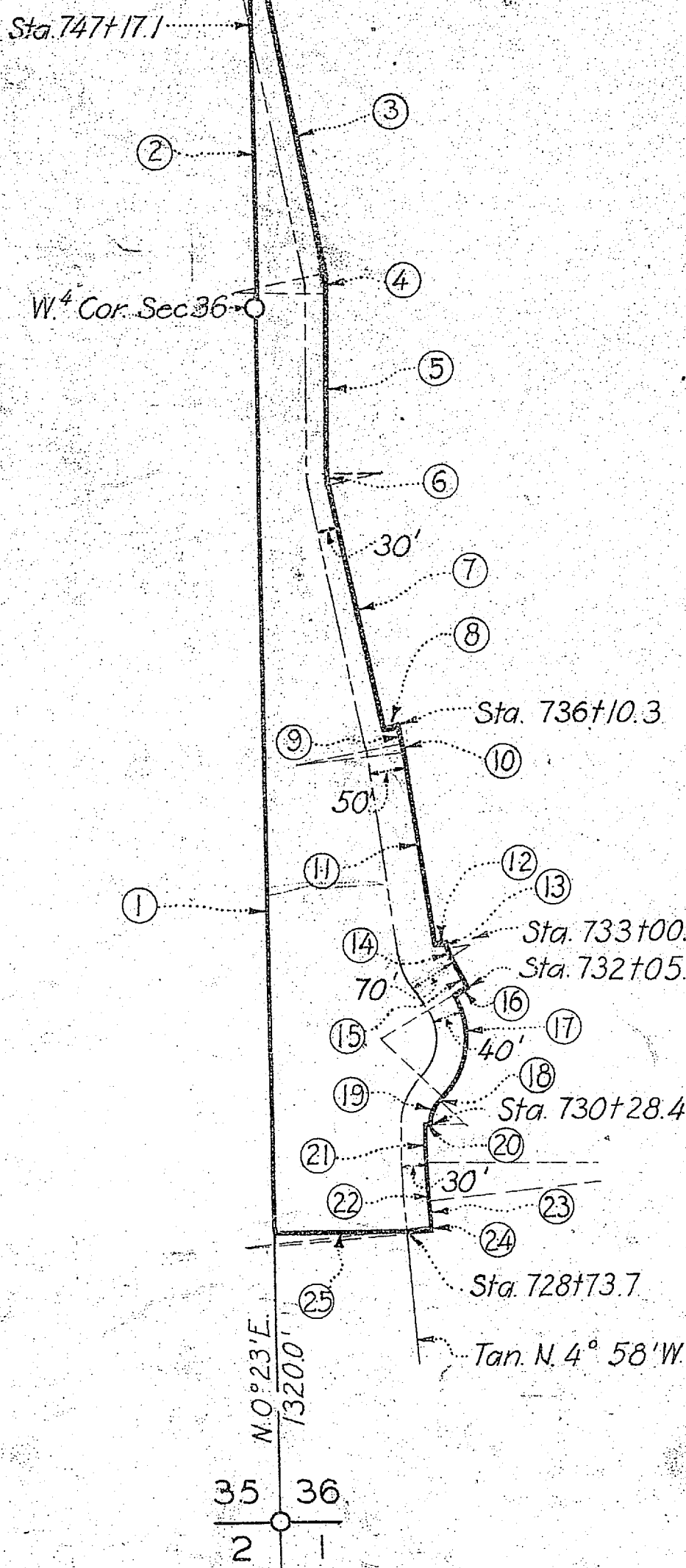


N ^o	COURSE	LENGTH	RAD.	TAN.	Δ. R _o L.
1.	N. 0°23' E.	1311.4			
2.	N. 0°22' E.	562.3			
3.	S. 10°24' E.	524.6			
4.		26.1	130.0	13.1	11°31' R.
5.	S. 1°07' W.	254.9			
6.		14.9	70.0	7.5	12°13' L.
7.	S. 11°06' E.	356.7			
8.	N. 78°54' E.	20.0			
9.	S. 11°06' E.	20.9			
10.		9.8	150.0	4.9	3°45' R.
11.	S. 7°21' E.	282.8			
12.	N. 82°39' E.	20.0			
13.	S. 7°21' E.	4.5			
14.		13.0	30.0	6.6	24°48' L.
15.	S. 32°09' E.	46.4			
16.	S. 57°51' W.	30.0			
17.		162.8	120.0	96.7	77°45' R.
18.	S. 45°36' W.	0.1			
19.		37.8	49.0	19.9	44°13½' L.
20.	N. 88°37½' W.	10.0			
21.	S. 1°22½' W.	55.5			
22.		53.0	470.0	26.6	6°27½' L.
23.	S. 5°05' E.	41.8			
24.		3.9	530.0	2.0	0°13' R.
25.	N. 89°38' W.	221.7			
26.	S. 87°27' E.	43.3			
27.		7.6	170.0	3.8	2°34' L.
28.	S. 10°19' W.	125.3			
29.		55.0	130.0	27.9	24°16' R.
30.	N. 0°22' E.	182.2			



KEY MAP

BONNEVILLE ORCHARD CO.
 A part of W.² Sec 36
 T.8N., R.2W., S.L.M.
 Total 6.21 Acres

DEPARTMENT OF THE INTERIOR
 BUREAU OF RECLAMATION
 OGDEN RIVER PROJECT-UTAH
 RIGHTS OF WAY
 OGDEN BRIGHAM CANAL

DRAWN: E.V.C. SUBMITTED: _____
 TRACED: F.W.R. RECOMMENDED: _____
 CHECKED: KCA F.W.R. APPROVED: _____

Scale 1 in = 200 ft 4-D-168 Ogden, Utah 5-235